

# ALMAC Automatic Leveling Mobile Elevating Work Platform

- Applicant Name: Modern (Int'l) Access & Scaffolding Ltd.
- Product Name: Automatic Leveling Mobile Elevating Work Platform

- Specification:

- Model:

- BIBI 1090-BL ELC (PA19-039)
    - BIBI 1090-BL EVO (PA19-040)
    - JIBBI 1250 EVO (PA19-041)
    - JIBBI 1250 ELC (PA19-041)
    - JIBBI 1670 EVO (PA19-041)
    - JIBBI 1670 LTH (PA19-041)

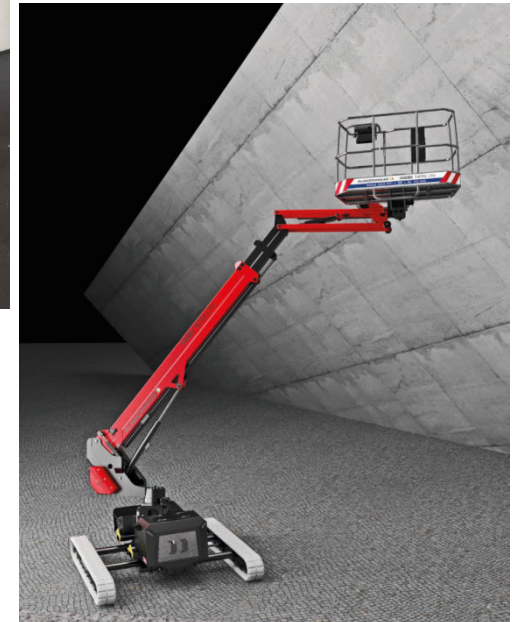
- Max. Working Height : 10m to 16m

- Max. Platform Height : 8m to 14m

- Max. Platform Capacity : 230kg to 300kg

- Weight : approx. 2,830kg to 3,910kg

- Power Source : Diesel Engine, Battery and/or 220V, 50Hz AC



## ALMAC Automatic Leveling Mobile Elevating Work Platform

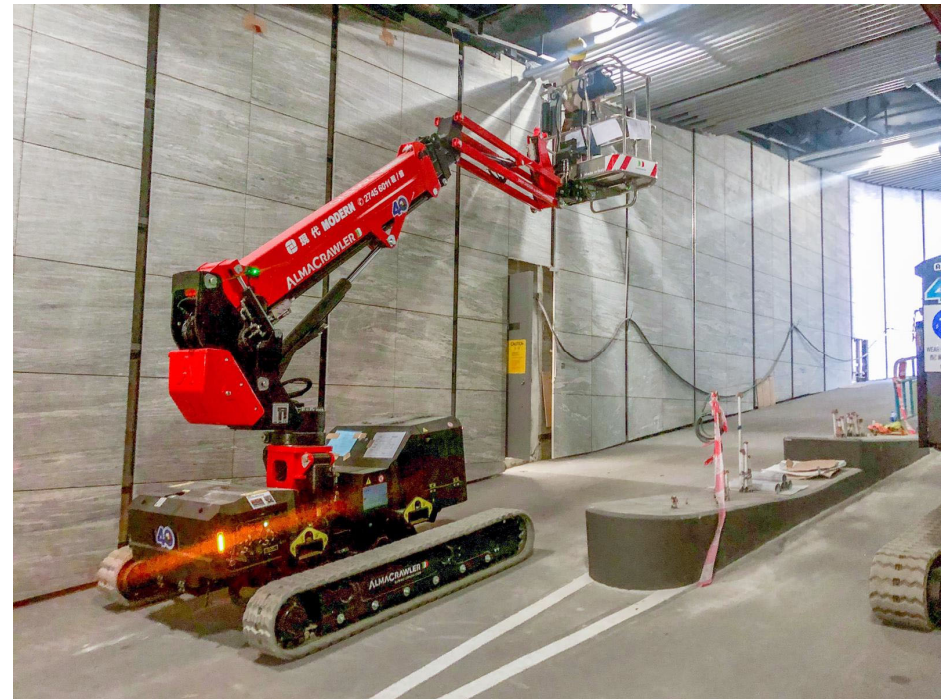
- Core Function: Automatic leveling MEWPs for safe access on slope or uneven and rough terrain, up to 15 degrees.
- Technology Used: Dynamic leveling & Pro-active leveling.
- Patent: Patent pending
- First Launch Date: 2017
- Construction Process Involved: Work at height, building services, decoration, etc.

## ALMAC Automatic Leveling Mobile Elevating Work Platform

- Key Improvement in Construction Process:
  - Productivity: This innovative product can be driven and working on slope or uneven and rough terrain. It can reduce a lot of time for erection and dismantling of traditional scaffold work platform, which has to be shifted zone by zone manually.
  - Quality: Workers can work more precisely, when they can access an accurate & comfort working position, especially on slope or uneven & rough terrain.
  - Safety: This innovative product is specifically designed for application on slope or uneven and rough terrain. It can eliminate any misuse of traditional slab machine, which is designed for flat surface, when working on slope or uneven and rough terrain.
- Comparison with current practice and popular models:
  - Innovative automatic leveling enables the operator to work easily and always in full safety conditions even in big slopes up to 15 degrees, or uneven and rough terrain. Traditional machines can only work on flat and even surface with a maximum of 3 to 5 degrees inclination.

# ALMAC Automatic Leveling Mobile Elevating Work Platform

- Adoption Example:
  - Car park ramp ceiling work at New World construction site, King's Road, North Point
  - Time saving from 3-6 months by traditional machines or scaffolding to 2 months.



# ALMAC Automatic Leveling Mobile Elevating Work Platform

- Adoption Example:
  - Disneyland tree trimming work
  - Time saving from 10 days by traditional tree climbing to 3 days.

