

# SmartWorks 智安建

## Safety Alert System for Temporary Lift Shaft Gate 臨時升降機閘門安全警報系統



SmartTone Solutions developed the Safety Alert System for Temporary Lift Shaft Gate to enhance construction site safety. This is an end-to-end work flow solution implemented by mobile-IoT technology together with sensors, web portal and the SmartTeam mobile app, it provides additional safety control to mitigate the risk of workers falling from lift shaft.

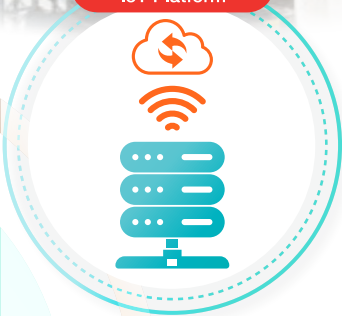
SmartTone Solutions 開發臨時升降機槽閘門安全警報系統，以提升建築地盤安全。它是一項利用流動物聯網技術連接感應器、網絡平台及 SmartTeam 手機應用程式的全面工作流程解決方案，提供額外安全控制措施以減低工人從升降機槽下墮的風險。



建築地盤  
Construction Site

物聯網平台  
IoT Platform

定期傳送實時狀態  
Regularly Send Current Status



跟進  
Follow Up

流動物聯網安全警報感應器  
Mobile IoT Safety Alert Sensor

偵測感應器的異常讀數  
Detect Reading of Sensor Above the Threshold

地盤辦公室  
Site Office

建築地盤  
Construction Site

傳送閘門開啟警報  
Send Gate Open Alert



流動物聯網網絡平台  
Mobile IoT Web Portal

手機應用程式  
SmartTeam Mobile App

# 物聯網 (IoT) 提升安全水平

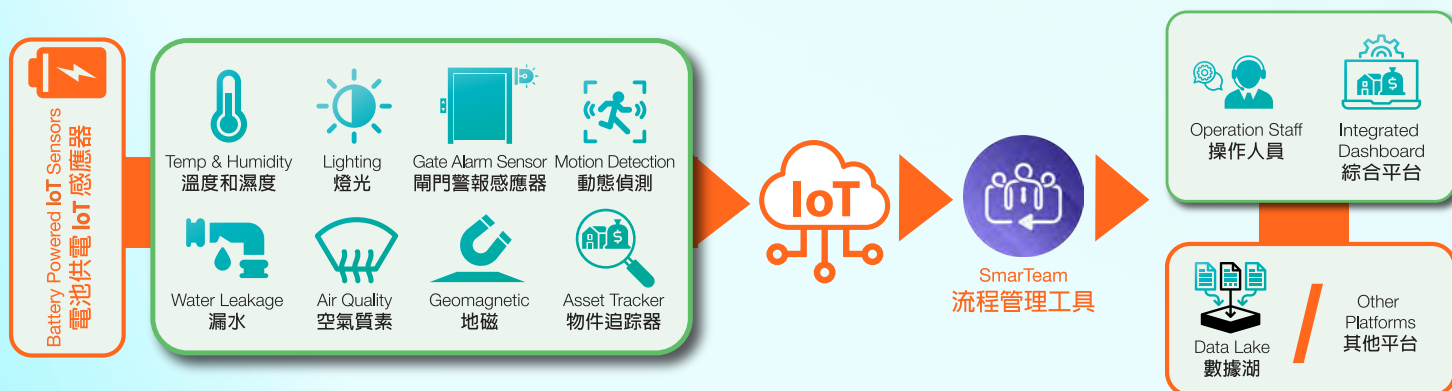
## Internet of Things (IoT) for Safety Enhancement

SmartWorks provides various of IoT sensors to monitor preventable problem and improve safety at construction sites. For example, water sensor can monitor water leaking at electricity supply area, air quality sensor can monitor oxygen level and prevent loss of consciousness of workers in confined space.

智安建提供各種 IoT 感應器，監察可避免的問題並提升地盤安全。例如漏水感應器可避免在供電位置出現漏水，而空氣質素感應器可監察氧氣水平，避免工人於密閉空間內失去意識。

### IoT 感應器自動監控及操作

#### Monitor and Operate Automatically by IoT Sensors



### 智安建整合最新科技，以六項智能服務提升地盤安全。

SmartWorks adopts the latest technologies with 6 Smart Services to enhance worksite safety.

- Enhance operational safety 提升營運安全
- Promote workers' health 宣揚工人健康
- Strengthen management efficiency 加強管理效率
- Improve environmental performance 改善環境質素



了解更多 Learn More



查詢 Enquiry:  
business\_markets@smartone.com